

RHY LINK Scanner

The RHY LINK Scanner is a groundbreaking manual chain scanner designed for unparalleled precision in circumferential inspections of tubes and pipes. Engineered with versatility in mind, this scanner boasts encoded probe positioning, making it an ideal solution for a wide range of inspection scenarios.

BENEFITS

Versatility: Adapt to different inspection techniques effortlessly, offering flexibility in choosing the right method for your specific requirements.

Precision: Encoded probe positioning ensures accurate and reliable inspections, contributing to the overall quality of your testing processes.

Ease of Use: The user-friendly QuickLinks system and built-in encoder make the RHY LINK Scanner accessible to both seasoned professionals and those new to the field.

The RHY LINK Scanner is more than a tool; it's a solution crafted to elevate your inspection processes. Secure, precise, and adaptable – experience the future of pipe inspections with the RHY LINK Scanner.

SPECIFICATIONS

- Chain links for 4 inches to 40 inches pipe ODs, with a quick-release adjustable buckle.
- 3 probe-holder bar (100mm, 200mm 300mm).
- Two horizontal probe holders and 2 Vertical probe holders
Minimum Wedge Width: 17.1 mm (0.7 in) and
Maximum Wedge Width: 57.6 mm (2.3 in)
- Umbilical Length: 5 m (16.4 ft) 1f Cable conduit attachment fixture.
- RHY LINK SCANNER custom tool.
- A carrying case.
- Inspection Surface: Ferrous and non-ferrous

KEY FEATURES

Configurable Design: The RHY LINK's adaptable design effortlessly caters to phased array ultrasonic testing). Whether you require single or multiple probes, this scanner can be easily configured to meet your specific inspection needs.

User-Friendly QuickLinks System: Say goodbye to cumbersome setup procedures. The RHY LINK Scanner features a QuickLinks system, ensuring the scanner can be securely attached to the pipe with ease. Streamlined processes lead to increased efficiency.

Built-In Encoder: With a built-in encoder, the RHY LINK Scanner delivers encoded positional feedback directly to the instrument of your choice. This not only enhances accuracy but also simplifies the overall inspection process by eliminating the need for external encoders.

ABOUT US

NDLITE TECHNOLOGIES

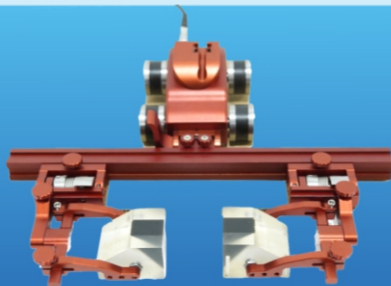
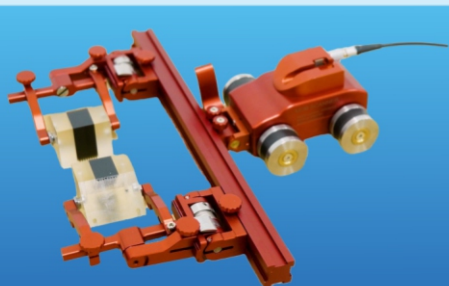
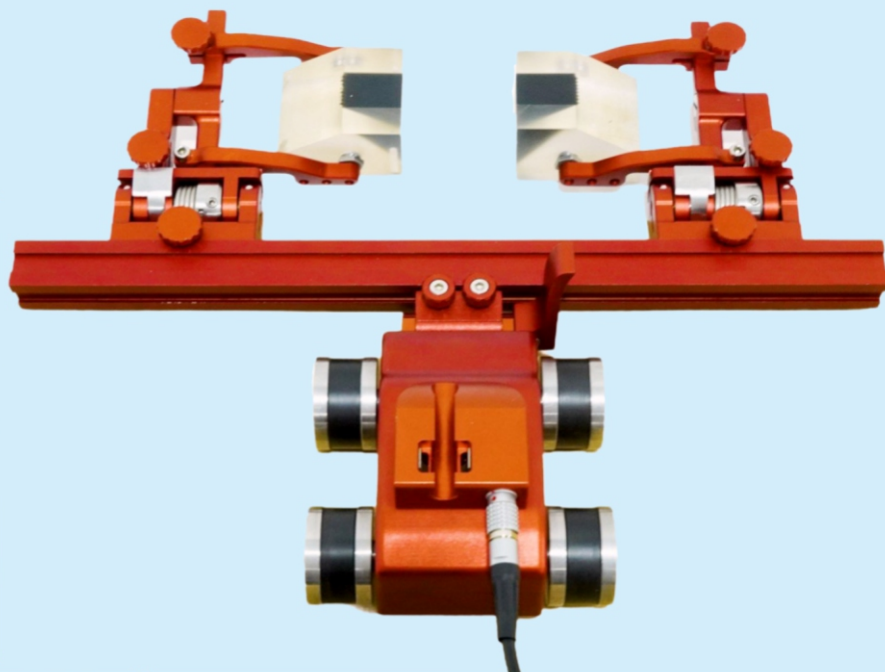
PHONE : +65 97283248 / +84909313164

EMAIL : shankar@ndlite.tech/hieu.vn@ndlite.tech

ADDRESS : 10 Anson Road,
#33-10C International Plaza,
Singapore - 079903

MOB Scanner

The MOB scanner appears to be a versatile and user-friendly tool for weld inspections, offering a range of features to ensure efficiency and accuracy in the scanning process.



KEY FEATURES

Precision Encoding: The MOB incorporates a precise encoding system for accurate and reliable scanning of welds. This is essential for obtaining high-quality inspection data.

Uncomplicated Probe Holding: The probe holding mechanism is designed to be straightforward, ensuring that users can easily secure and use the probes during inspections. This simplicity contributes to a user-friendly experience.

Compact Scanning Experience: The overall design of the MOB emphasizes compactness, making it easy to handle and maneuver in tight spaces. This is particularly useful in welding environments where accessibility might be a challenge.

Quick Setup and Ease of Use: The scanner is designed to facilitate quick setup and be user-friendly. This can save time during inspections and reduce the learning curve for operators.

Brake for Stability: The inclusion of a brake suggests that the scanner can be securely held in place during setup.

Modular Design: The scanner's modular design allows for the configuration of two probes in various ways. This flexibility is advantageous, as it enables the use of different types of probes or a combination of techniques like phased array and time-of-flight diffraction (TOFD).

Built-in Encoder and Magnetic Wheels: The built-in encoder helps with precise positioning and movement control during scanning. The magnetic wheels suggest that the scanner is specifically designed for use on ferrous surfaces, providing adherence for stability.

SPECIFICATIONS

- MOB for 3 inches ODs and above.
- 3 probe-holder bar (100mm, 200mm 300mm).
- Two horizontal probe holders and 2 Vertical probe holders
Minimum Wedge Width: 17.1 mm (0.7 in) and
Maximum Wedge Width: 57.6 mm (2.3 in)2
- Umbilical Length: 5 m (16.4 ft)1f Cable conduit attachment fixture.
- MOB SCANNER custom tool.
- A carrying case.
- Inspection Surface: Ferrous



ABOUT US

NDLITE TECHNOLOGIES

PHONE : +65 97283248 / +84909313164

EMAIL : shankar@ndlite.tech/hieu.vn@ndlite.tech

ADDRESS : 10 Anson Road,
#33-10C International Plaza,
Singapore - 079903

HYDRO-MAG ENCODER

The product offered by E-inventive is compatible with HydroForm systems. When combined with the removal spring-loaded Encoder, it can be utilized for both manual and automatic scanning of welds. The Encoder can easily be mounted to any standard frame bar and provides a generous 5-meter (16.4-ft) length of encoder cable.



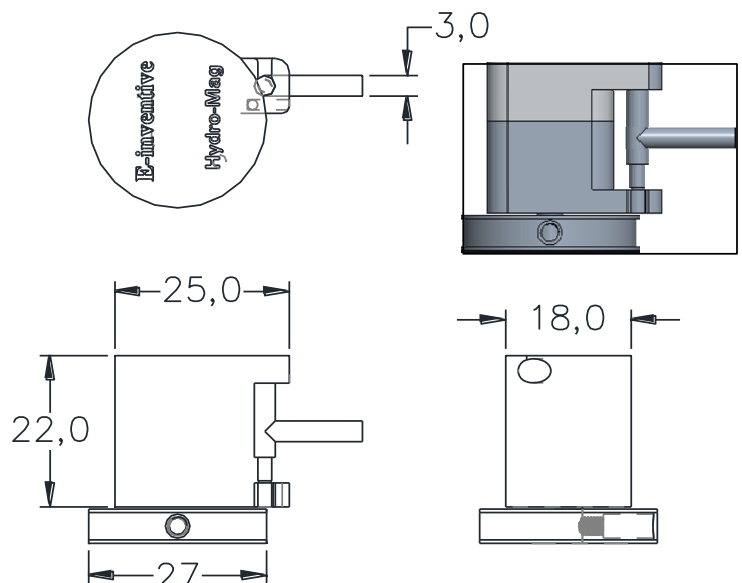
FEATURES

- Magnetic Encoder
- Circuit control
- Waterproof
- Small dimensions
- Encoder resolution is engraved on the wheel
- Replacement encoder wheel with 3 sizes
- Double O-ring tire for better adherence
- Stainless steel case

APPLICATION

- Hydro form
- Manual scanner with 3 sizes of wheel
- Auto-scanner with 3 sizes of wheel

SPECIFICATION



ABOUT US

NDLITE TECHNOLOGIES

PHONE : +65 97283248 / +84909313164

EMAIL : shankar@ndlite.tech
: hieu.vn@ndlite.tech

ADDRESS : 10 Anson Road,
#33-10C International Plaza,
Singapore - 079903



OD-Mag Encoder

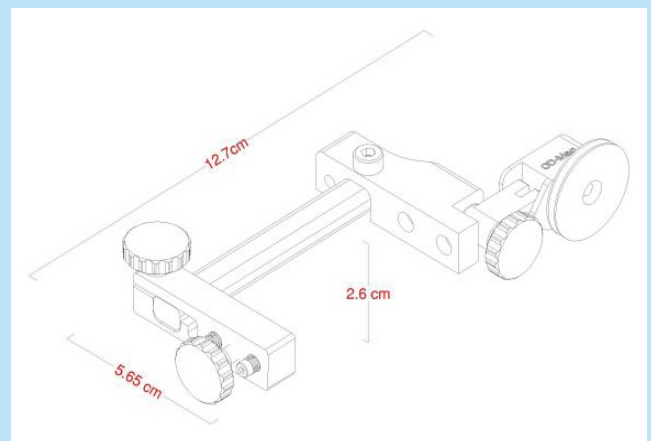
This product is highly suitable for limited access inspection due to its compatibility. Its small size enables unique scanning opportunities in challenging spaces. The OD-Mag Encoder is designed to mount onto any standard frame bar and offers a generous 5-meter (16.4-foot) length of encoder cable. The precise mini encoder can be positioned along the frame bar, ensuring consistent contact between the encoder wheel and the surface through the spring action mechanism.

FEATURES

- Magnetic Encoder
- Circuit control
- Waterproof
- Small dimensions
- Encoder resolution is engraved on the wheel
- Affix any probe/wedge to the OD Mag with ease (no tools required).



SPECIFICATION



APPLICATION

- All type of Manual Weld Scanning
- Useful during limited access inspection as the small size allows for unique scanning opportunities.

ABOUT US

NDLITE TECHNOLOGIES

PHONE : +65 97283248 / +84909313164
EMAIL : shankar@ndlite.tech
: hieu.vn@ndlite.tech

ADDRESS : 10 Anson Road,
#33-10C International Plaza,
Singapore - 079903



EW-Mag Encoder

When used in conjunction with the removable spring-loaded Encoder, this product enables both manual and automatic scanning of welds. The Encoder can be easily mounted onto any standard frame bar and provides a generous 5-meter (16.4-ft) length of encoder cable. This versatile combination allows for efficient and precise scanning operations.

FEATURES

- Magnetic Encoder Type
- Circuit control
- Waterproof
- Small dimensions
- Encoder resolution is engraved on the wheel
- Double O-ring tire for better adherence

APPLICATION

- All type of Manual Weld Scanning and Auto scanner

ABOUT US

NDLITE TECHNOLOGIES

PHONE : +65 97283248 / +84909313164

EMAIL : shankar@ndlite.tech
: hieu.vn@ndlite.tech

ADDRESS : 10 Anson Road,
#33-10C International Plaza,
Singapore - 079903

COBR II-MAG Encoder

One of the significant advantages of this product is its ability to fulfill the replacement needs of small bore scanners. The Cobr II-Mag is compatible with various types of scanners and can be used for welds within the tube diameter range of 0.84 to 4.5 inches. The Cobr-Mag Encoder is available in two types: standard and custom-built, ensuring compatibility with all major instrument brands. Mounting the Encoder to any standard frame bar is straightforward, and it comes with a 2.5-meter length of ncoder cable.

FEATURES

- Magnetic Encoder
- Circuit control
- Waterproof
- Small dimensions
- Stainless steel case

APPLICATION

- Replacement encoder of Cobra Scanner



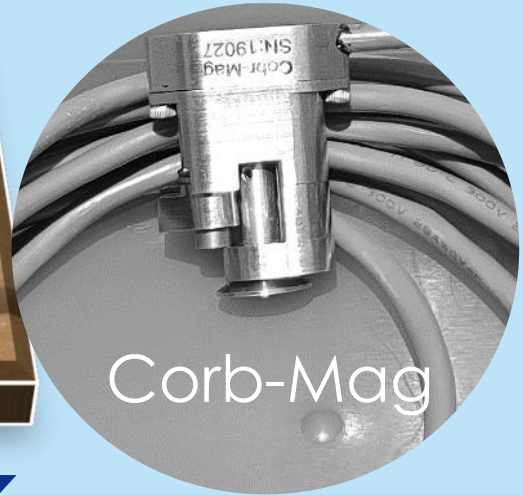
ABOUT US

NDLITE TECHNOLOGIES

PHONE : +65 97283248 / +84909313164

EMAIL : shankar@ndlite.tech
: hieu.vn@ndlite.tech

ADDRESS : 10 Anson Road,
#33-10C International Plaza,
Singapore - 079903



COBR-MAG Encoder

Compatible with any type of scanner for tube diameter range 0.84 to 4.5 inches of weld. Cobr-Mag Encoder has 2 types standard and custom built for compatibility with all standard instrument brands. Encoder mounts to any standard frame bar and supplies 2.5 m of encoder cable length.

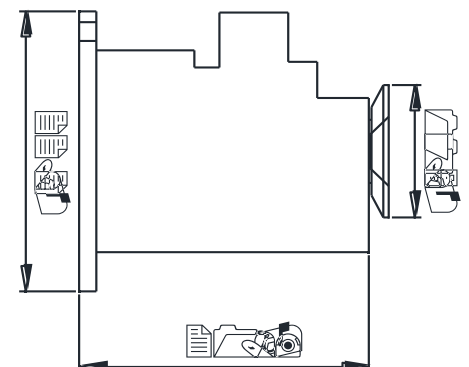
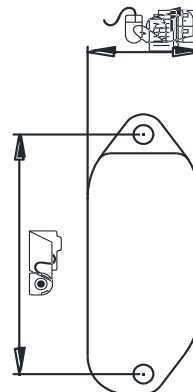
FEATURES

- Magnetic Encoder
- Circuit control
- Waterproof
- Small dimensions
- Stainless steel case

APPLICATION

- Replacement encoder of small bore scanner

SPECIFICATION



ABOUT US

NDLITE TECHNOLOGIES

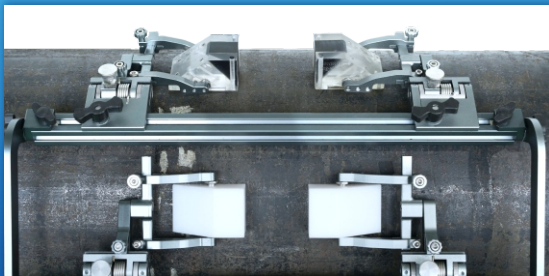
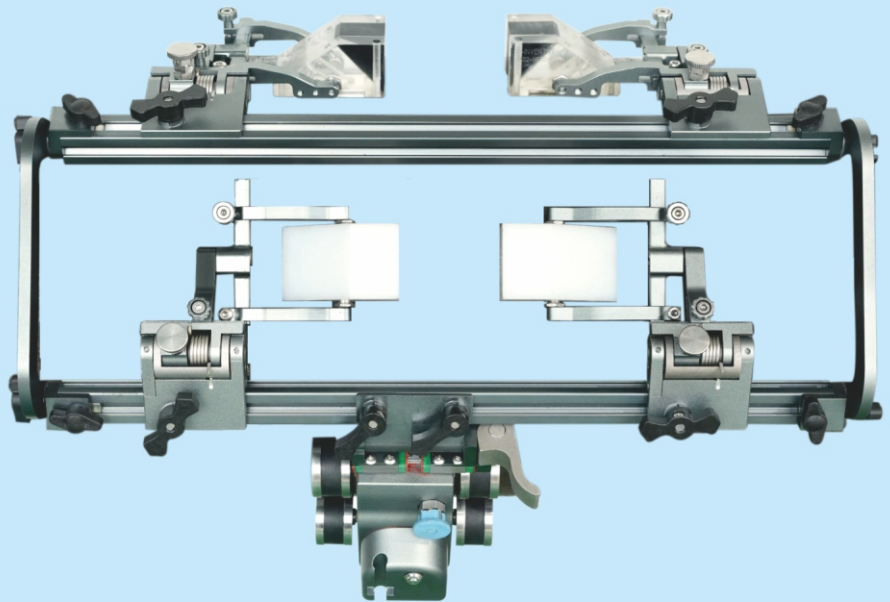
PHONE : +65 97283248 / +84909313164

EMAIL : shankar@ndlite.tech
: hieu.vn@ndlite.tech

ADDRESS : 10 Anson Road,
#33-10C International Plaza,
Singapore - 079903

MOB Scanner

The MOB scanner appears to be a versatile and user-friendly tool for weld inspections, offering a range of features to ensure efficiency and accuracy in the scanning process.



KEY FEATURES

Precision Encoding: The MOB incorporates a precise encoding system for accurate and reliable scanning of welds. This is essential for obtaining high-quality inspection data.

Uncomplicated Probe Holding: The probe holding mechanism is designed to be straightforward, ensuring that users can easily secure and use the probes during inspections. This simplicity contributes to a user-friendly experience.

Compact Scanning Experience: The overall design of the MOB emphasizes compactness, making it easy to handle and maneuver in tight spaces. This is particularly useful in welding environments where accessibility might be a challenge.

Quick Setup and Ease of Use: The scanner is designed to facilitate quick setup and be user-friendly. This can save time during inspections and reduce the learning curve for operators.

Brake for Stability: The inclusion of a brake suggests that the scanner can be securely held in place during setup.

Modular Design: The scanner's modular design allows for the configuration of two probes in various ways. This flexibility is advantageous, as it enables the use of different types of probes or a combination of techniques like phased array and time-of-flight diffraction (TOFD).

Built-in Encoder and Magnetic Wheels: The built-in encoder helps with precise positioning and movement control during scanning. The magnetic wheels suggest that the scanner is specifically designed for use on ferrous surfaces, providing adherence for stability.

SPECIFICATIONS

- MOB for 3 inches ODs and above.
- 3 probe-holder bar (100mm, 200mm 300mm).
- Four probe holders
Minimum Wedge Width: 17.1 mm (0.7 in) and
Maximum Wedge Width: 57.6 mm (2.3 in)²
- Umbilical Length: 5 m (16.4 ft) 1f Cable conduit attachment fixture.
- MOB SCANNER custom tool.
- A carrying case.
- Inspection Surface: Ferrous

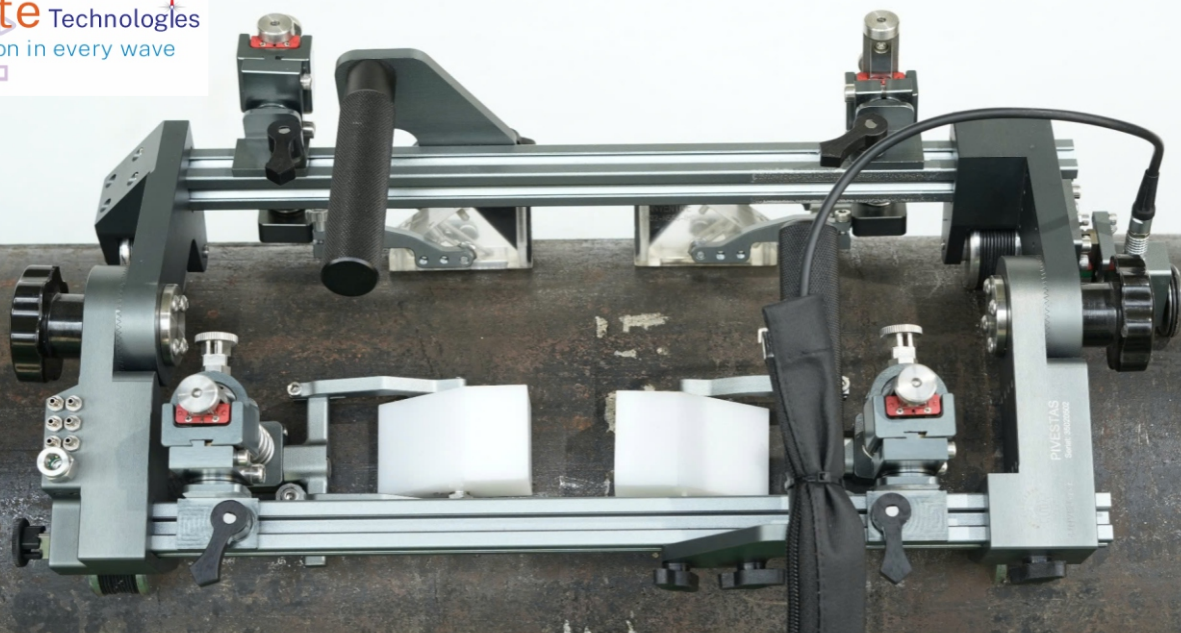
ABOUT US

NDLITE TECHNOLOGIES

PHONE : +65 97283248 / +84909313164

EMAIL : shankar@ndlite.tech
: hieu.vn@ndlite.tech

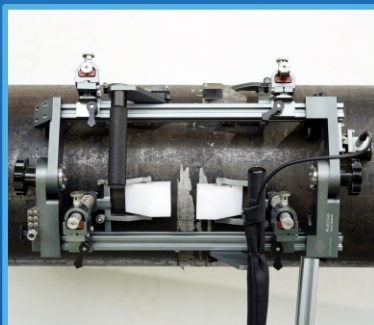
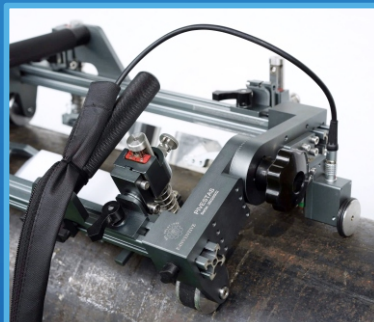
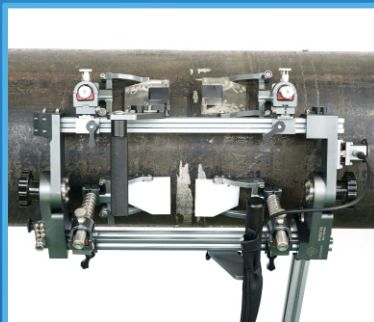
ADDRESS : 10 Anson Road,
#33-10C International Plaza,
Singapore - 079903



PIVESTAS SCANNER

HIGH-STABILITY INSPECTION SOLUTION

The **PIVESTAS Scanner** is engineered for superior stability and adaptability, ensuring precise and efficient ultrasonic inspections in demanding environments. Its flexible configuration allows for seamless integration with various inspection applications.



✓ KEY FEATURES

- **Adjustable Frame Angle:** Accommodates pipes as small as **4.5 inches OD (114.3 mm OD)** for enhanced inspection versatility.
- **Spring-Loaded Probe Holder:** Maintains optimal radial pressure on the wedge, ensuring **consistent and reliable data acquisition**.
- **Strong Magnetic Wheels:** Covered with durable rubber for secure adhesion to **ferromagnetic surfaces**, enabling smooth movement with minimal operator effort.

✓ SPECIFICATIONS

- **Pipe Range (Circumferential):** OD 4 inches to flat
- **Pipe Range (Longitudinal):** 8 inches and above
- **Magnetic Encoder:** 1 (included)
- **Probe Holding Capacity:** 4 phased array probes
- **Umbilical Length:** 6 m (16.4 ft)
- **Inspection Surface:** Ferrous materials

The **PIVESTAS Scanner** provides a **robust and efficient solution for accurate ultrasonic weld inspections, even in challenging and confined spaces**

✓ ABOUT US

NDLITE TECHNOLOGIES

ADDRESS : 10 Anson Road, #33-10C International Plaza, Singapore - 079903

PHONE/ WHATSAPP : +65 97283248 / +84909313164

EMAIL : shankar@ndlite.tech/ hieu.vn@ndlite.tech



BEETLE-ROCAM

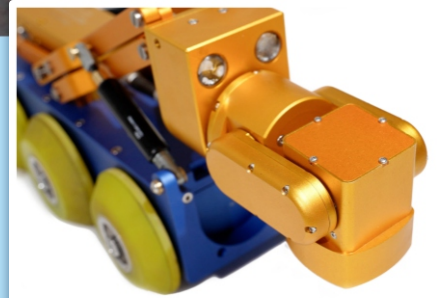
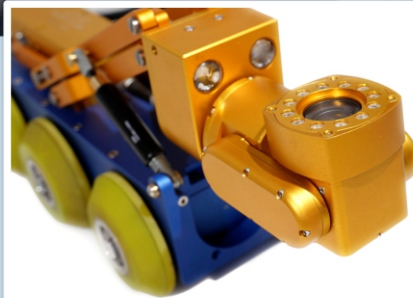
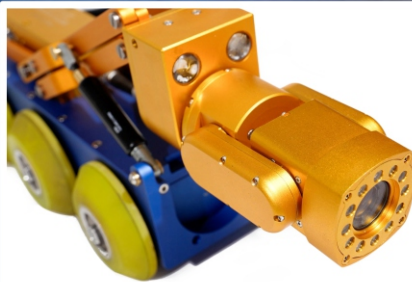
BEETLE-ROCAM: a robotic camera system engineered to excel in diverse inspection scenarios. With an impressive inspection range spanning from 8 inches to 138 inches (230-1000mm), it can seamlessly navigate through elbow bends of 90 degrees or more with a diameter of 10 inches and above. Additionally, its maximum capability includes horizontal pipe inspections up to a 30-degree angle. Crafted specifically for harsh, corrosive environments and demanding long-distance pipe inspections, this innovative system is perfectly suited for a wide array of industries, including oil pipelines, natural gas pipelines, and wind turbine blade detection.

NDLITE TECHNOLOGIES

ADDRESS : 10 Anson Road,
#33-10C International Plaza, Singapore - 079903

PHONE/ WHATSAPP : +65 97283248 / +84909313164

EMAIL : shankar@ndlite.tech/ hieu.vn@ndlite.tech



SPECIFICATIONS

For Robot

- Inspection Range : 8 inches to 138 inches
(230-1000mm)
- Length : 430mm
- Height : 120mm
- Width : 130mm
- Cable length : 100 meters.

For Camera

- Screen Size : 10" color LCD
- Resolution : 1920*1080
- Camera : 360 degree endless rotation, 180 degree flip
- Zoom : 10 times zoom in and out Pixel 5/8 megapixel
- Video format: MPEG4/AVI
- Storage : 32G.MAX.1T



With its compact dimensions and robust capabilities, the BEETLE-ROCAM offers unparalleled performance and reliability for critical inspection tasks in challenging environments.